



Cypress College
9200 Valley View Street
Cypress, CA 90630
(714) 484-7000
www.cypresscollege.edu



*The
Educational
Interpreter
Training
Program*

Educational Interpreting is a highly specialized segment of the broader sign language interpreter training spectrum. This program offers training that meets the needs of the interpreter in educational settings and is pursuant to state certification.

The development of this program is partially funded by Title V Hispanic Serving Institutions Grant.

For more information, please contact:

Dennis M. Davino, MA, LMFT
Teacher Preparation and Paraprofessional
Programs Coordinator
or

Connie Legaspi
Teacher Preparation and Paraprofessional
Programs Assistant

(714) 484-7186

www.cypresscollege.edu/eitp

ddavino@cypresscollege.edu

clegaspi@cypresscollege.edu



North Orange County Community College District

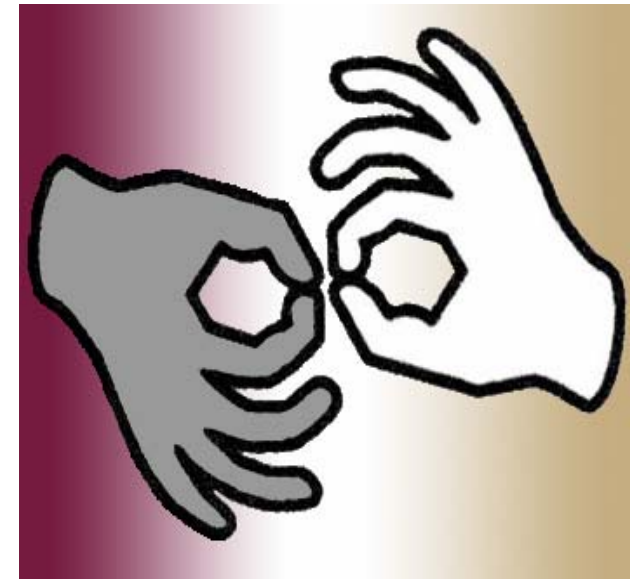
Board of Trustees

Jeffery P. Brown
Barbara Dunsheath
Leonard L. Lahtinen
Michael B. Matsuda
Molly McClanahan
Donna Miller
Manuel Ontiveros

Elisa Garcia, Student Trustee, Cypress College
Victoria Rizo, Student Trustee, Fullerton College

Jerome Hunter, Ed. D., Chancellor
Marjorie Lewis, Ph. D., President, Cypress College

The North Orange County Community College District, in compliance with all applicable Federal and State laws, does not discriminate on the basis of race, color, national origin, ancestry, marital status, age, religion, disability, sex, or sexual orientation in any of its policies, procedures or practices. The District is also committed to maintaining campuses that are free of harassment, drugs and alcohol. A copy of the District's full policy on non-discrimination, sexual harassment, sexual assault treatment and counseling, and maintenance of a drug-free environment is available in the District Human resources Office.



*Specialized Quality
Training
For
Educational
Interpreters*

Why Specialized Training for Educational Interpreters?

The goal of the Educational Interpreter Training Program at Cypress College is to better prepare those serving this highly specialized segment of the broader sign language interpreting service spectrum.

With the large number of DHH students educated in all levels of local schools and regional programs, educational interpreters and their services are in constant demand. All too often though, the supply of skilled professionals falls far below the number necessary to adequately meet the service needs. The result is that the students and programs are seriously underserved.

Both trainees and seasoned veterans are also underserved. They consistently request more specialized training and support to provide the highest level of services to the students they serve and to the programs that employ them. In addition, with the state certification requirement effective January 1, 2007, programs dedicated to the professional preparation of these highly employable yet underserved professionals are no longer a luxury; they are an absolute necessity.

Cypress College is committed to meeting the needs of the educational interpreter through competent, professional, broad-based training and meaningful, real-world support.

Course Offerings

Educational Interpreting I

3 units

This course prepares students to offer sign language interpreting services for the Deaf and Hard of Hearing (DHH) with specific focus on service provision in the elementary and middle school level educational settings.** Students will explore the rationale and methods of the service delivery models specifically targeting educational interpreting, address the ethics of educational interpreting, and learn about the certification process for educational interpreters in the state of California.

**This first course does target K – 8 environments, but covers general service provision philosophy and rationale that would be applicable to all levels. Those who work in other educational settings would clearly benefit from this course as well. The Educational Interpreting II course will continue the study to cover high school, vocational, and secondary settings.

Prerequisite: Three semesters of college sign instruction in: ASL, PSE/CASE or SEE

Educational Interpreting Practicum I

3 units

This course will provide opportunities enabling students to apply previously learned theory to sign language interpreting services for the Deaf and Hard of Hearing (DHH). There is a specific focus on service provision in the elementary and middle school level educational settings.** Students will apply learned rationale and methods to a service delivery model specifically targeting educational interpreting, demonstrate application of the ethics of educational interpreting, and work toward certification for educational interpreters in the state of California.

**This first practicum course does target K – 8 environments, but covers general service provision practice, feedback, and skill building that would be applicable to all levels. Those who work in other educational settings would clearly benefit from this course as well. The Practicum II course will continue the practice and skill building to cover high school, vocational, and secondary settings.

Prerequisite: Three semesters of college sign instruction in: ASL, PSE/CASE or SEE

Educational Interpreting II

3 units

This course prepares students to offer sign language interpreting services for the Deaf and Hard of Hearing (DHH) with specific focus on service provision in the high school, vocational, and higher educational settings. Students will explore the rationale and methods of the service delivery models specifically targeting educational interpreting, continue to address the ethics of educational interpreting, and learn about the certification process for educational interpreters in the state of California.

Prerequisite: Educational Interpreting I

Educational Interpreting Practicum II

3 units

This course will provide opportunities enabling students to apply previously learned theory to sign language interpreting services for the Deaf and Hard of Hearing (DHH). There is a specific focus on service provision in the high school, vocational, and higher educational settings. Students will apply learned rationale and methods to a service delivery model specifically targeting educational interpreting, demonstrate application of the ethics of educational interpreting, and work toward certification for educational interpreters in the state of California.

Prerequisite: Educational Interpreting Practicum I

Externship/Mentorship

3 units

Fieldwork in various educational settings under the mentorship of expert educational interpreters.

Prerequisite: Educational Interpreting Practicum II

Introduction to Special Education

3 units

This course provides an overview of special education. It includes the theoretical and educational foundations of special education, a historical background of the field of special education, legal issues, and techniques for inclusion of individuals with special needs in all settings. Various implications of full inclusion are discussed, *including the role and responsibilities of key members of the educational team including educational sign language interpreters.*

Prerequisite: ENGL 100

Language Structure and Use

3 units

This course will examine the unique characteristics of the DHH child's development. Domains addressed include cognitive, language, and socio-emotional development - areas often most impacted by hearing loss. The relationship of hearing loss and degree of impact on development will be explored through a survey of audiological evaluation, types of amplification, age of onset issues, and access to language models. *Further comparisons will be drawn between typical development and patterns often seen with DHH children.*

Prerequisite: ENGL 100